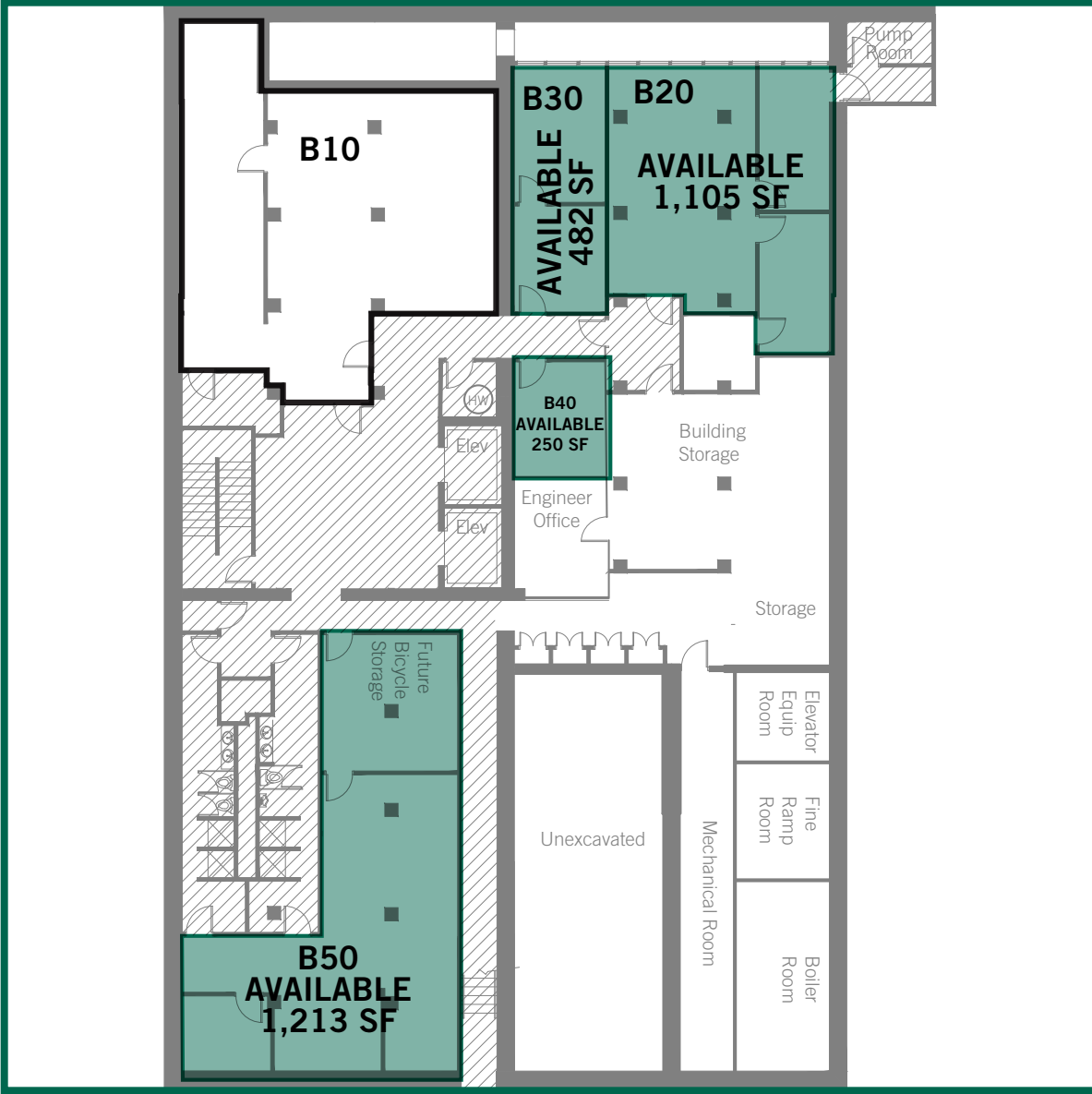


1730 Blake | 1730 Blake Street, Denver, CO

GARDEN LEVEL



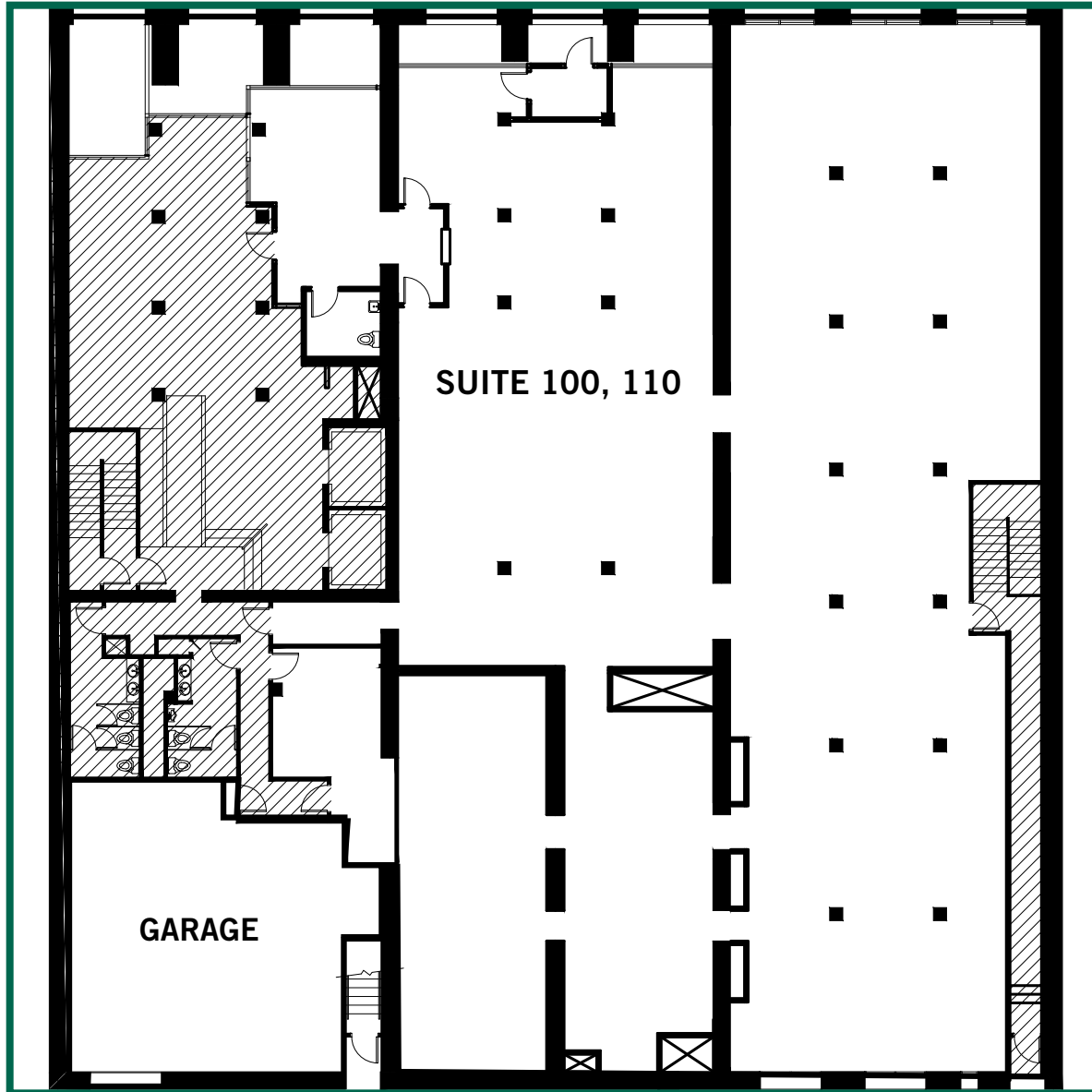
BUILDING DETAILS

| Property Overview | |
|-------------------|----------------|
| Total GLA | 56,847 sq. ft. |
| Stories | 4 |
| Parking | 13 |
| Space Available | |
| Suite B20 | 1,105 sq. ft. |
| Suite B30 | 482 sq. ft. |
| Suite B40 | 250 sq. ft. |
| Suite B50 | 1,213 sq. ft. |
| Suite 300 | 5,887 sq. ft. |
| Suite 305 | 3,781 sq. ft. |
| Suite 310 | 1,520 sq. ft. |
| Suite 335 | 2,139 sq. ft. |
| Suite 400 | 2,762 sq. ft. |
| Suite 430 | 3,156 sq. ft. |

- Leased
- Vacant

1730 Blake | 1730 Blake Street, Denver, CO

FIRST LEVEL



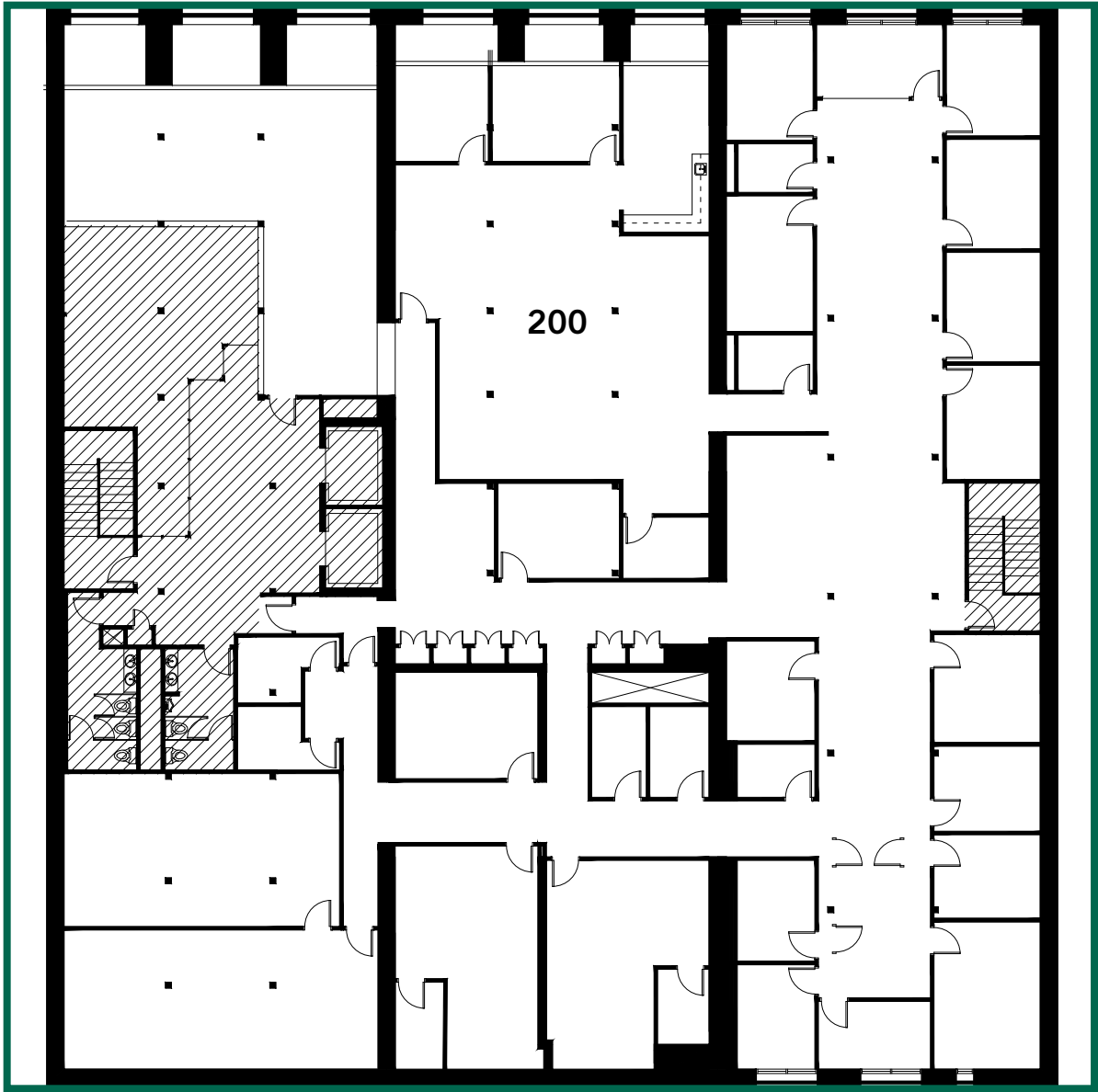
BUILDING DETAILS

| Property Overview | |
|-------------------|----------------|
| Total GLA | 56,847 sq. ft. |
| Stories | 4 |
| Parking | 13 |
| Space Available | |
| Suite B20 | 1,105 sq. ft. |
| Suite B30 | 482 sq. ft. |
| Suite B40 | 250 sq. ft. |
| Suite B50 | 1,213 sq. ft. |
| Suite 300 | 5,887 sq. ft. |
| Suite 305 | 3,781 sq. ft. |
| Suite 310 | 1,520 sq. ft. |
| Suite 335 | 2,139 sq. ft. |
| Suite 400 | 2,762 sq. ft. |
| Suite 430 | 3,156 sq. ft. |

- Leased
- Vacant

1730 Blake | 1730 Blake Street, Denver, CO

SECOND LEVEL



BUILDING DETAILS

Property Overview

| | |
|-----------|----------------|
| Total GLA | 56,847 sq. ft. |
| Stories | 4 |
| Parking | 13 |

Space Available

| | |
|-----------|---------------|
| Suite B20 | 1,105 sq. ft. |
| Suite B30 | 482 sq. ft. |
| Suite B40 | 250 sq. ft. |
| Suite B50 | 1,213 sq. ft. |
| Suite 300 | 5,887 sq. ft. |
| Suite 305 | 3,781 sq. ft. |
| Suite 310 | 1,520 sq. ft. |
| Suite 335 | 2,139 sq. ft. |
| Suite 400 | 2,762 sq. ft. |
| Suite 430 | 3,156 sq. ft. |

- Leased
- Vacant

1730 Blake | 1730 Blake Street, Denver, CO

THIRD LEVEL



BUILDING DETAILS

| Property Overview | |
|-------------------|----------------|
| Total GLA | 56,847 sq. ft. |
| Stories | 4 |
| Parking | 13 |
| Space Available | |
| Suite B20 | 1,105 sq. ft. |
| Suite B30 | 482 sq. ft. |
| Suite B40 | 250 sq. ft. |
| Suite B50 | 1,213 sq. ft. |
| Suite 300 | 5,887 sq. ft. |
| Suite 305 | 3,781 sq. ft. |
| Suite 310 | 1,520 sq. ft. |
| Suite 335 | 2,139 sq. ft. |
| Suite 400 | 2,762 sq. ft. |
| Suite 430 | 3,156 sq. ft. |

- Leased
- Vacant

1730 Blake | 1730 Blake Street, Denver, CO

FOURTH LEVEL



BUILDING DETAILS

| Property Overview | |
|-------------------|----------------|
| Total GLA | 56,847 sq. ft. |
| Stories | 4 |
| Parking | 13 |
| Space Available | |
| Suite B20 | 1,105 sq. ft. |
| Suite B30 | 482 sq. ft. |
| Suite B40 | 250 sq. ft. |
| Suite B50 | 1,213 sq. ft. |
| Suite 300 | 5,887 sq. ft. |
| Suite 305 | 3,781 sq. ft. |
| Suite 310 | 1,520 sq. ft. |
| Suite 335 | 2,139 sq. ft. |
| Suite 400 | 2,762 sq. ft. |
| Suite 430 | 3,156 sq. ft. |

- Leased
- Vacant